



POLYSPACE™ LICENSE INSTALLATION GUIDE





How to Contact The MathWorks

www.mathworks.com
comp.soft-sys.matlab
www.mathworks.com/contact_TS.html

suggest@mathworks.com
bugs@mathworks.com
doc@mathworks.com
service@mathworks.com
info@mathworks.com

508-647-7000 (Phone)
508-647-7001 (Fax)

The MathWorks, Inc.
3 Apple Hill Drive
Natick, MA 01760-2098

Web
Newsgroup
Technical Support

Product enhancement suggestions
Bug reports
Documentation error reports
Order status, license renewals, passcodes
Sales, pricing, and general information

For contact information about worldwide offices, see the MathWorks Web site.



TABLE OF CONTENTS

1	INTRODUCTION.....	4
1.1	ABOUT THIS MANUAL	4
1.2	WHAT IS FLEXNET	4
1.3	POLYSPACE LICENSES ARCHITECTURE	4
1.3.1	<i>Individual licenses</i>	4
1.3.2	<i>Concurrent licenses</i>	4
1.4	FLEXNET SOFTWARE COMPONENTS.....	5
1.5	SUPPORTED MACHINES AND VERSIONS	9
1.5.1	<i>Available FLEXnet release</i>	9
1.5.2	<i>Supported machines</i>	9
1.5.3	<i>Recommendations about network for concurrent licensing</i>	9
2	INSTALLING THE FLEXNET SERVER.....	10
2.1	LOCATION	10
2.2	WINDOWS INSTALL	10
2.3	UNIX INSTALL.....	10
3	SETTING UP THE FLEXNET SERVER	11
3.1	ON A UNIX SYSTEM.....	11
3.2	ON A WINDOWS SYSTEM	11
3.3	CONFIGURING THE LICENSE MANAGER AS A WINDOWS SERVICE	11
3.4	INSTALLING POLYSPACE LICENSES ON AN EXISTING FLEXNET SERVER	14
4	LICENSE ON A POLYSPACE PRODUCT.....	15
4.1	LICENSE.DAT INSTALLATION AND LOCATION	15
4.2	CHECKING POLYSPACE USAGE	15
4.3	ERROR MESSAGES	16
5	LICENSE FORMAT	18
5.1	TYPE OF LICENSING	18
5.2	GETTING THE LICENSE HOSTID	19

TABLE OF FIGURES

FIGURE 1:	POLYSPACE FLEXNET SERVER ARCHITECTURE.....	5
FIGURE 2:	FLEXNET PACKAGE SOFTWARE.....	7
FIGURE 3:	"SERVICE/LICENSE FILE" TAB IN LMTOOLS.EXE.....	13
FIGURE 4:	CONFIG SERVICES TAB.....	13
FIGURE 5:	START/RESTART/STOP FLEXNET SERVER TAB.	13
FIGURE 6:	SERVER STATUS TAB.	13
FIGURE 7:	DISK VOLUME SERIAL NUMBER ACCESSIBLE FROM LMTOOLS.	21



1 Introduction

1.1 About this Manual

This manual explains FLEXnet for administrators and end users throughout PolySpace Products. It concerns the use of an individual license, a FLEXnet server installation and the use of PolySpace Products with FLEXnet licenses.

1.2 What is FLEXnet

Welcome to FLEXnet[®], the *de facto* standard network license manager, to control the use of the PolySpace software products.

FLEXnet is the most popular license manager in the software industry. FLEXnet is best known for its ability to allow software licenses to be available anywhere on a network, instead of being tied to specific machines. Floating licensing benefits both users and license administrators. Users make more efficient use of fewer licenses by sharing them on the network. License control the users and machine(s) that have access to the software that is being managed by FLEXnet.

1.3 PolySpace licenses architecture

Two types of architectures are available: individual and concurrent licenses.

1.3.1 Individual licenses

You are an end user and you want to operate, install, and administer the software yourself. An Individual license authorizes you to install, operate, and administer your PolySpace software on any computer to which you have access. For example, with an Individual license, you can run PolySpace products only on your work system. In addition, this system can be any combination of Microsoft Windows or UNIX computers.

With an Individual license, you are the system administrator. In this role, you are responsible for:

- Installing the PolySpace software on your computer
- Ensuring that you are the only person that can run the software on this computer.

The MAC address or the Serial disk number is necessary to generate this individual license (see also section “Getting the license hostid”). Please follow the section “License on a PolySpace product” of this manual.

1.3.2 Concurrent licenses

Your organization is standardized on the FLEXnet license manager, or you need to impose strict limits on software use for accounting or license management purposes.

The access is not limited to specific Named Users, as it is with a Network Named User license. Rather, concurrent licenses use license keys to control access. Users check out a license key when they start a PolySpace product. When all the keys for a particular product are checked out, the license manager denies further requests.

As system administrator for a Concurrent license, your primary goal is to set-up an installation that optimizes accessibility to the products. For Concurrent licenses, you can only install the software in a Network Concurrent User installation type.

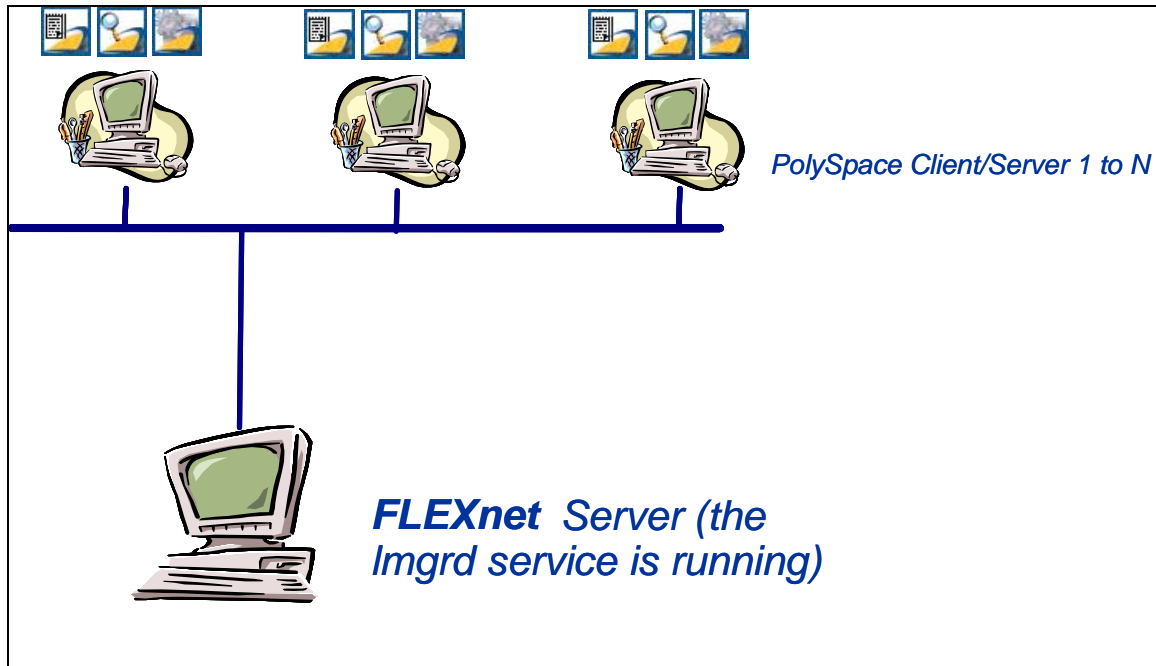


Figure 1: PolySpace FLEXnet server architecture.

Figure 1 shows the possibilities for using the PolySpace products with a FLEXnet licenses management:

- PolySpace products are installed and used by N PolySpace products. The “Client” or “Server” notion here corresponds to one of the PolySpace products.
- Licenses are requested to the FLEXnet server,
- The FLEXnet server can be installed on the same machine than a PolySpace product if it corresponds to a supported OS (see section “Supported machines and versions”).

1.4 FLEXnet software components

- On a Windows OS CPU

Software components relate to the standard FLEXnet package (see Figure 2):

- The license file: *license.dat*. If you currently do not have a license please contact The MathWorks (see “**How To contact The MathWorks**” page 2).

- The Graphical interface allows the installation of the FLEXnet server: *FLEXiDInstaller.exe*.

Note that The *FLEXiDCleanupUtility.exe* interface allows to uninstall the FLEXnet server.

- The Graphical interface allows the management of the license: *lmtools.exe*.
- The associated Vendor service: *MLM.exe*. It keeps track of the number of licenses checked out, and where they are.
- A License service: *lmgrd.exe*. It handles the initial contact with PolySpace, passing the connection on to *MLM.exe*. It also starts and restarts *MLM.exe*.
- A program allowing to stop the Server: *lmdown.exe*. It can be used with a command line.
- A program allowing you to see the hostid of your machine: *lmhostid.exe*. It can be used with a command line.
- A program allowing to check available features of the license server: *lmflex.exe*. It can be used with a command line.
- A FLEXnet utilities program: *lmutil.exe*. used for license server management and administration (display of the mac address, ip address, disk serial number, user name, etc.). It can be used with a command line.
- Data file *windows_flexlm_tools* is internal binary data file related to associated Windows machine.

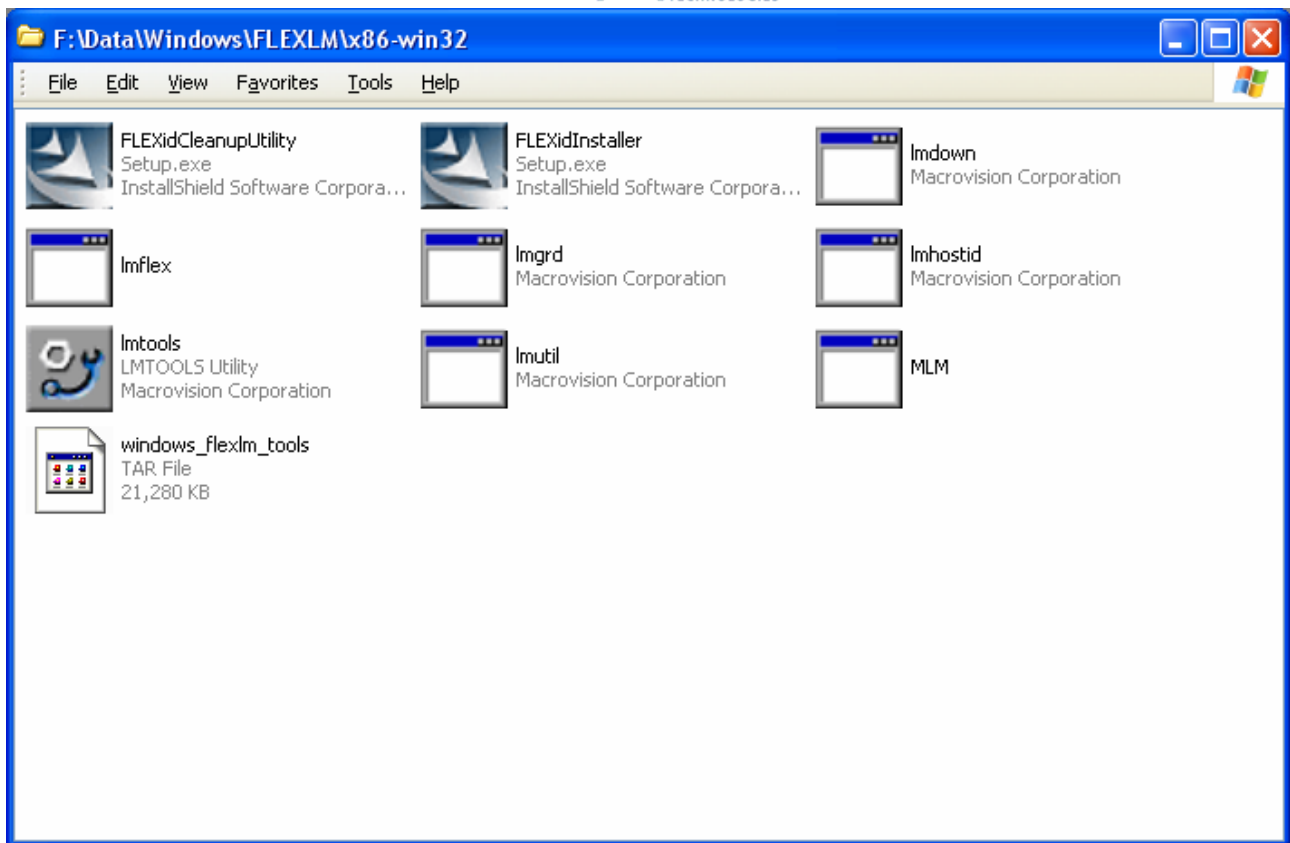


Figure 2: FLEXnet package software.

Note: It is a simple copy of what is available on the CD-ROM in <CD-ROM>\Data\Windows\FLEXLM\x86-win32.

- On a Linux machine and a Solaris machine

Software components related to the standard FLEXnet package is equivalent except that it is for a UNIX machine:

- The associated Vendor service: *MLM*. It keeps track of the number of licenses checked out, and where they are.
- The License daemon: *lmgrd*. It handles the initial contact with PolySpace, passing the connection on to *MLM*. It also starts and restarts *MLM*.
- The tool allows the management of the license: *lmutil*.
- A program allowing to stop the Server: *lmdown*.
- A program allowing to see the hosted of the machine: *lmhostid*.
- A program allowing to check available features of the license server: *lmflex*.
- Data files *linux_flexlm_tools* and *sun_solaris_flexlm_tools* are internal binary data files related to associated OS machine.



Note: It is a simple copy of what is available on the CD-ROM in
<CD-ROM>/Data/Unix/FLEXLM/x86-linux
and
<CD-ROM>/Data/Unix/FLEXLM/sparc-solaris.



1.5 Supported machines and versions

1.5.1 Available FLEXnet release

This is the release **10.8** of FLEXnet which is supported.

1.5.2 Supported machines

The FLEXnet server is available on all platforms supported by PolySpace products (plus Windows Server 2003). The following table summarizes protections, FLEXnet server installation and PolySpace Products usage in relation with PolySpace products versions and operating systems:

	<i>Protection</i>	<i>Windows</i>			<i>RedHat¹</i>		<i>Solaris</i>		<i>Suse</i>	
	<i>Port</i>	<i>2000</i>	<i>XP</i>	<i>2003</i>	<i>30</i>	<i>4.0</i>	<i>2.7</i>	<i>2.8</i>	<i>10.0</i>	<i>10.1</i>
Installation of server FLEXnet release 10.8										
	<i>Hostid²</i>	OK	OK	OK	OK	OK	OK	OK	OK	OK
PolySpace Products										
All products from release 2007a+	<i>Hostid</i>	OK	OK		OK	OK	OK	OK	OK	OK

1.5.3 Recommendations about network for concurrent licensing

It is mandatory to have a good network configuration on a FLEXnet client to have good performances of an analysis with PolySpace.

We have noticed that if the client machine knows the FLEXnet server in its hosts file, then the analysis is quick. At the inverse, if the client machine does not know it (ping <server_name> does not work), then the analysis takes more than twice the time.

¹ RedHat Enterprise Linux WorkStation

² Hostid can be a Mac address or a serial disk number (see “Getting the license hostid”).

2 Installing the FLEXnet server

FLEXnet software components are located on the PolySpace Products CD-ROM.

2.1 Location

On Windows, FLEXnet components are located on the CD-ROM in `<CD-ROM>\Data\Windows\FLEXLM\x86-win32`.

On UNIX, they are located on the CD-ROM in `<CD-ROM>/Data/Unix/FLEXLM`. This directory contains sub-folders `x86-linux`, and `sparc-solaris`:

- `x86-linux` directory concerns all Linux OS supported by PolySpace.
- `sparc-solaris` directory concerns Solaris OS supported by PolySpace.

Note: the current documentation is located in `<CD-ROM>/Docs/Manuals`.

2.2 Windows Install

Install consists in only a simple copy/paste:

1. The first step: copy the `<CD-ROM>\Data\Windows\FLEXLM\x86-win32` directory on the machine. A permanent directory must be chosen on this machine.
2. The second step: copy in the chosen directory the license file `license.dat`.
3. The third step: run the `FLEXiDInstaller.exe` in the chosen directory and follow the instruction given by the installer.

The previous picture (see Figure 2) shows an example of a copy of the FLEXnet server on a chosen directory.

2.3 UNIX Install

Install consists in only a simple copy/paste:

1. The first step: copy the `<CD-ROM>/Data/Unix/FLEXLM/<UNIX>` directory on the server (`<UNIX>` could be `x86-linux` or `sparc-solaris`). A permanent directory must be chosen on this machine.
2. Then copy the license file `license.dat` in the chosen directory.



3 Setting up the FLEXnet server

Before setting up the FLEXnet server, it is mandatory to update the `license.dat` file with the right name of the server or with its IP address: see section “License format”.

3.1 On a UNIX system

Start the FLEXnet daemon server:

```
<FLEXnetPath>/lmgrd -c <license_lic_path> -l <filename.log> &
```

where `<license_lic_path>` is the absolute location of the file `license.dat` file. It is recommended to launch server with option `-l <filename.log>`. It permits to have a log file where all accesses and exchanges are notified in file name `<filename.log>`.

Example:

With all commands and `license.dat` file located in `/usr/local/PolySpace/FLEXnet`:

```
/usr/local/PolySpace/FLEXnet/lmgrd -c
/usr/local/PolySpace/FLEXnet/license.dat -l
/usr/local/PolySpace/FLEXnet/FLEXnet.log &
```

Note: `./lmgrd -h` gives more information about all available options of the program. Also, `FLEXnet.log` file gives a state of the FLEXnet server.

To shutdown the server, launch: `./lmutil lmdown -c <license_lic_path>`

Note: `./lmutil -h` gives more information about all available options of the `lmutil` program.

3.2 On a Windows system

On the chosen platform, the installation must be performed with a user that has the **administrator** rights. It is recommended that you use the administrator user for the given platform.

3.3 Configuring the License Manager as a Windows Service

To configure a license server as a service, you must have Administrator privileges:

- Step1: Run `lmtools.exe`.
- Step 2: Click the “Configuration using Services” radio button, and then click on the “Config. Services” tab (see Figure 3: “Service/License File” tab in `lmtools.exe`).
- Step 3: Configure the “Conf Services” tab (see Figure 4: Config Services tab.):
 - In the “Service Name” field, type the name of the service that you want to define, for example, “PolySpace FLEXnet Server”.

- In the “Path to the *lmgrd.exe* file” field, enter or browse to *lmgrd.exe* for the license Server.
- In the “Path to the license file” field, enter or browse to the license file for the license Server. It relates to the *license.dat* file. The *license.dat* file is provided when a PolySpace product has been bought.

Note: The server name or IP address must be updated in the *license.dat* file (see section “Type of licensing”).

- In the “Path to the debug log file”, enter or browse to the debug log file that this license server writes. Before, you have created it in the permanent chosen directory.
 - To save the new “PolySpace FLEXnet Server” service, click on “Save Service”.
 - Do not forget to enable the two radio button “Use Services“ and “Start server at power up“ (see Figure 4: Config Services tab.).
- Step 4: Start the FLEXnet Server (see Figure 5: Start/Restart/Stop FLEXnet Server tab.) using the “Start/Stop/ReRead” tab. To start the new “PolySpace FLEXnet Server” service, click on “Start Server”.

Note: Any modification on the *license.dat* file requires the server to reread the license file, this is accomplished by using the “ReRead license file” button.

- Step 5: Verify the status of the server using the “Server Status” tab (see Figure 6: Server Status Tab.). This verification is done by clicking on “Perform Status Enquiry” button.

On the output window, a message gives the status of the Server and of the *license.dat* file (see format in section “License format”).

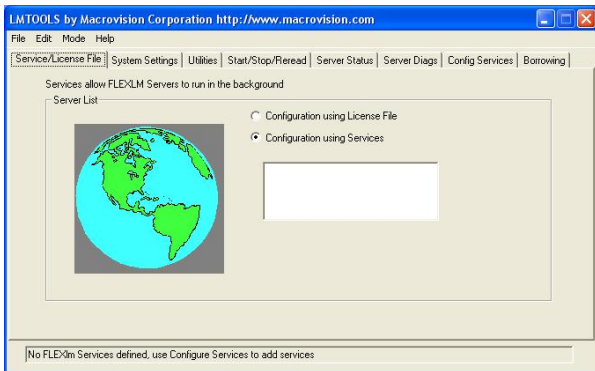


Figure 3: "Service/License File" tab in lmttools.exe.

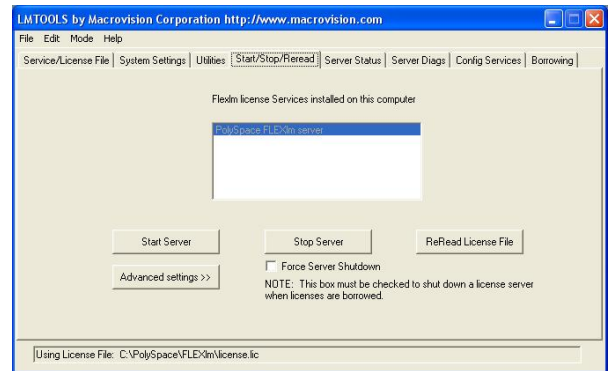


Figure 5: Start/Restart/Stop FLEXnet Server tab.

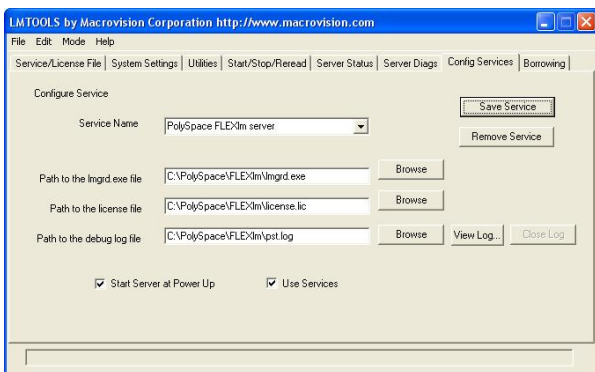


Figure 4: Config Services tab.

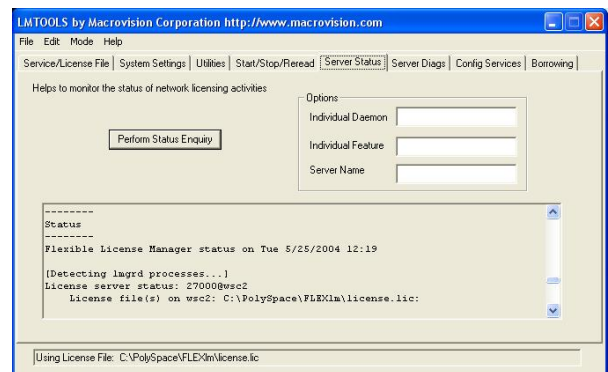


Figure 6: Server Status Tab.



3.4 Installing PolySpace licenses on an existing FLEXnet server

Please refer to the end user manual of FLEXnet server which deals with manipulation. It describes how to add or modify a PolySpace licenses to an existing server. The end user manual can directly get updated information on the macrovision web site (<http://www.macrovision.com>).

Note: The *lmgrd* or *lmgrd.exe* service must have the same version number for all Vendor products. Please refer to the FLEXnet version number supported by PolySpace at paragraph “Available FLEXnet release”.

4 License on a PolySpace product

This section only deals with the installation of the *license.dat* file on the PolySpace products, and behaviors related to standard usage.

Please refer to the Installation Guide to the install of a PolySpace product.

4.1 *License.dat* installation and location

The same *license.dat* file must be used for the FLEXnet server and for any PolySpace product, with the standard PolySpace subfolder localization (see format in section “License format”):

- <PolySpaceInstallCommon>/etc on a UNIX platform (name of sub folder is by default PolySpace_Common and located just above PolySpace Product).
- <PolySpaceInstallCommon>\etc on a Windows platform.

Important Note: The *license.dat* file must not be renamed and must be placed in the etc directory, just like the old “license.dat” file. Along with this, you must remove any “license.dat” file from the etc directory.

For the license file localization, The FLEXnet behavior is used. The license file is searched in the following order:


- License file from MLM_LICENSE_FILE or LM_LICENSE_FILE environment variable if set.
- License file from etc directory in <PolySpaceInstallCommon>.
- License file from Windows registry (\HKEY_LOCAL_MACHINE\Software\FLEXlm\License Manager) or in \$HOME/.flexlmrc on UNIX machine.
- License file from c:\flexlm on a Windows machine or from /usr/local/flexlm/licenses on a UNIX machine.

Note that if no license.dat has been found at the previous location, The FLEXnet licensing management searches for a license.lic file.

4.2 Checking PolySpace Usage

The PolySpace products usage is standard. The command *polyspace[-desktop]-[c/ada/cpp/ada95]-check-license* allows you to check a PolySpace license.

The result of the command can be seen in a PolySpace log file:

<pre><polyspace-c-check-license 2007a+ PID460 PGID2616> <polyspace-viewer V4.2.2.12> ... Options used with Verifier:</pre>		
Release 2007a+ Revision 4.2 vA		15/22

```
-prog=polyspace
-polyspace-version=4_2_1_6
...
-lang=C
-no-exec=true
...
Verifying host configuration ...
...
*** Configuration of the host : OK
Checking license ...
license is OK
```

On a Windows machine, the same command is available using a “cygwin” shell:
 /cygdrive/c/<PolySpaceInstallDir>/bin/polyspace[-desktop-]-
 [c|cpp|ada95]-check-license.

4.3 Error messages

Most of the error messages are displayed in the log file, just after a license checking. As the license can be checked at any moment during an analysis, a message can also be displayed at any location in the associated PolySpace Log file. It generally stops the analysis.

Common errors are the following:

- Error -15, the FLEXnet server is unreachable:

```
Checking license ...
Unable to checkout feature PolySpace_Client_C_CPP for version
17: Cannot connect to license server system.
The license server manager (lmgrd) has not been started yet,
the wrong port@host or license file is being used, or the
port or hostname in the license file has been changed.
Feature:          PolySpace_Client_C_CPP
Server name:     fitou
License path:
/usr/local/attol/atu/v33a/sun4/sunOS5/bin/license.txt:
  /usr/local.rhone/pst/tmp/nnu.lic:/usr/local.rhone/pst/*.lic
FLEXnet Licensing error:-15,570. System Error: 115 "Operation
now in progress"
For further information, refer to the FLEXnet Licensing End User
Guide, available at "www.macrovision.com".
*** License error
*** Aborting.
```

- Error -5, the PolySpace feature is not available:

```
Checking license ...
```




```

Unable to checkout feature PolySpace_Client_C_CPP for version
17: No such feature exists.
Feature:      PolySpace_Client_C_CPP
License path:
/usr/local/attol/atu/v33a/sun4/sunOS5/bin/license.txt:
  /usr/local.rhone/pst/tmp/nnu.lic:/usr/local.rhone/pst/*.lic
FLEXnet Licensing error:-5,357
For further information, refer to the FLEXnet Licensing End User
Guide, available at "www.macrovision.com".
*** License error
*** Aborting.

```

- Error -21, the maintenance date has expired:

```

Checking license ...
Unable to checkout feature PolySpace_Client_C_CPP for version
17: License file does not support this version.
Feature:      PolySpace_Client_C_CPP
Application version > License version: 17 > 16
License path:
/usr/local/attol/atu/v33a/sun4/sunOS5/bin/license.txt:
  /usr/local.rhone/pst/tmp/nnu.lic:/usr/local.rhone/pst/*.lic
FLEXnet Licensing error:-21,126
For further information, refer to the FLEXnet Licensing End User
Guide, available at "www.macrovision.com".
*** License error
*** Aborting.

```

- Error -10, the license date has expired:

```

Checking license ...
Unable to checkout feature PolySpace_Client_C_CPP for version
17: Feature has expired.
Feature:      PolySpace_Client_C_CPP
Expire date:  31-jan-2007
License path:
/usr/local/attol/atu/v33a/sun4/sunOS5/bin/license.txt:
  /usr/local.rhone/pst/tmp/nnu.lic:/usr/local.rhone/pst/*.lic
FLEXnet Licensing error:-10,32
For further information, refer to the FLEXnet Licensing End User
Guide, available at "www.macrovision.com".
*** License error
*** Aborting.

```

For other errors, please refer to the FLEXnet licensing End User Guide available at www.macrovision.com.

5 License format

The license file is named "*license.dat*".

5.1 Type of licensing

PolySpace product can run with two kinds of license files: concurrent licenses and individual licenses.

- **Concurrent license file**

This license file requires a FLEXnet license manager running. It has the following format:

```
SERVER <a_server> <server_hostid>
VENDOR MLM
INCREMENT      PolySpace_Feature      MLM      <passcode_version_number>
<date_of_license_end>      <number_of_licenses>      <key>
HOSTID=<internal_number> DUP_GROUP=UH SN=<a_serial_number>
```

- *<a_server>*: name of the FLEXnet server or IP address. **Note: This is the only value that can be edited (with an ASCII editor) by the administrator when the location of the FLEXnet server changes.** This file can be edited and *<a_server>* changed before setting up the FLEXnet server (see also section “Setting up the FLEXnet server”).
- *<server_hostid>*: This is the *hostid* of the server, usually the Mac address on UNIX system and the disk serial number on Windows (see section “Getting the license hostid”). The *<server_hostid>* must be given to obtain a license file (see section “Getting the license hostid”).
- MLM: Vendor daemon for PolySpace products licensing.
- *<PolySpace_Feature>*: type of license.

<i>PolySpace Feature</i>	<i>License type</i>
<i>PolySpace_Client_C_CPP</i>	PolySpace Client for C/C++ (including Viewer, MISRA, DRS, Main generator and Report features).
<i>PolySpace_Client_Ada</i>	PolySpace Client for Ada (including Viewer and Report features).
<i>PolySpace_Server_C_CPP</i>	PolySpace Server for C/C++ (including Remote Launcher, MISRA, DRS and Report features).
<i>PolySpace_Server_Ada</i>	PolySpace Server for Ada (including Remote Launcher and Report features).
<i>PolySpace_Model_Link_SL</i>	PolySpace Model Link SL (including Viewer, MISRA, DRS and Report features).
<i>PolySpace_Model_Link_TL</i>	PolySpace Model Link TL (including Viewer, MISRA, DRS and Report features).

	features).
<i>PolySpace_UML_Link_RH</i>	PolySpace UML Link RH (including Viewer and Report features).

Note: the previous table lists an **exhaustive** review of all available licenses for PolySpace products.

- *<number_of_licence>*: number of available licenses for a given type.
- *<passcode_version_number>* and *<date_of_license_end>*: available maintenance (and end dates.

Example:

```
SERVER dev13 831da5d6
VENDOR MLM
#
INCREMENT PolySpace_Client_C_CPP MLM 17 31-jan-2008 20 DF1FB89EB243
HOSTID=ID=12345 DUP_GROUP=UH SN=12345
INCREMENT PolySpace_Server_C_CPP MLM 17 31-jan-2008 20 9BFB0453E70F
HOSTID=ID=1234E DUP_GROUP=UH SN=1234E
INCREMENT PolySpace_Model_Link_SL MLM 17 31-jan-2008 20 B639E1D6739A
HOSTID=ID=324AF DUP_GROUP=UH SN=324AF
```

- **Individual license file**

This kind of license is used for individual user and computer. It **does not** require a FLEXnet license manager running. It has the following format:

```
INCREMENT <PolySpace_Feature> MLM <passcode_version_number>
<date_of_license_end> uncounted <key> HOSTID=<machine_hostid>
SN=<a_serial_number>
```

- *<machine_hostid>*: This is the *hostid* of the machine, usually the Mac address on UNIX system and the disk serial number on Windows (see section “Getting the license hostid”). The *<machine_hostid>* must be given to obtain a license file (see section “Getting the license hostid”).

Example:

```
INCREMENT PolySpace_Client_C_CPP MLM 17 31-jan-2008 uncounted DF1FB89EB243
HOSTID=DISK_SERIAL_NUM=e855c07a SN=AE12345
```

5.2 Getting the license hostid

- **On a UNIX machine**

The hostid corresponds to the MAC address of the machine where the FLEXnet server is running (using a concurrent license) or where the individual license is used.

The hostid of a UNIX machine can be display using the lmutil FLEXnet utility available on the PolySpace CD-ROM at <CD-ROM>/Data/Unix/FLEXLM/x86-linux for a Linux system or at

<CD-ROM>/Data/Unix/FLEXLM/sparc-solaris for a Solaris system. Use the following command:

```
./lmutil lmhostid
```

The result on a shell window looks like the following:

```
lmutil - Copyright (c) 1989-2007 by Macrovision Corporation. All rights reserved.
```

```
The FLEXlm host ID of this machine is "831da5d6"
```

The number between double quotes needs to be transmitted to The MathWorks in order to obtain the license file (see "How To contact The MathWorks" page 2).

- **On a Windows machine**

Hostid or <machine_hostid> corresponds to the Serial disk number of the machine where the FLEXnet server is running (using a concurrent license) or where the individual license is used.

The hostid of a Windows machine can be display using the Lmtools.exe FLEXnet utility available on the PolySpace CD-ROM at <CD-ROM>/Data/Windows/FLEXLM/x86-win32.

The serial number ("**Disk volume serial number**") needs to be checked in the "System Settings" tab of Lmtools.exe on windows (see Figure 7: Disk Volume Serial Number accessible from LMTOOLS.).

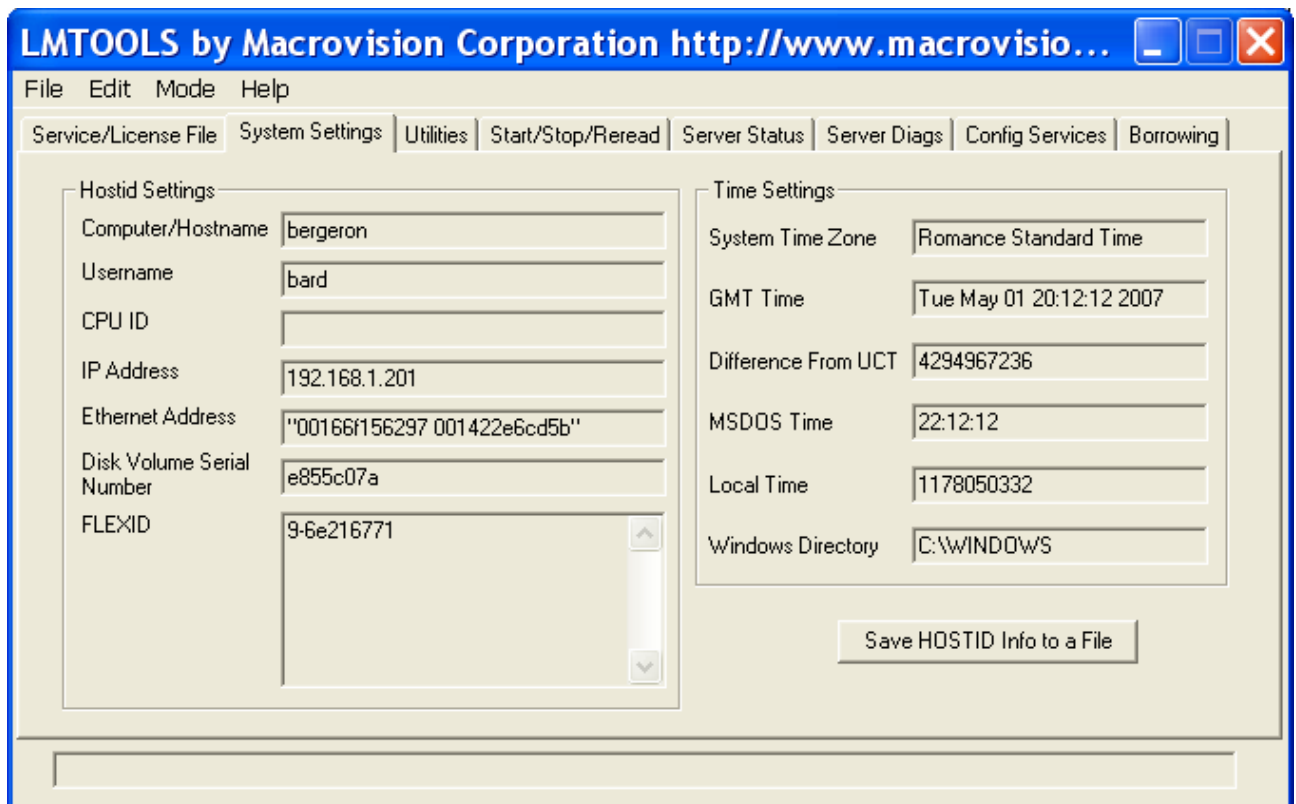




Figure 7: Disk Volume Serial Number accessible from LMTOOLS.

It can also be obtained using the following command prompt:

```
lmutil.exe lmhostid -vsn
```

The result on a Command Prompt window looks like the following:

```
lmutil - Copyright (c) 1989-2007 by Macrovision Corporation. All rights reserved  
  
The FLEXlm host ID of this machine is "DISK_SERIAL_NUM=e855c07a"
```

The number between double quotes needs to be transmitted to The MathWorks in order to obtain the license file (see **"How To contact The MathWorks"** page 2).

Index

\$		<i>lmflex</i>7
\$HOME/.flexlmrc	15	<i>lmflex.exe</i>
/		<i>lmgrd</i>7, 14
/usr/local/flexlm/licenses	15	<i>lmgrd.exe</i>
<		6, 12, 14
<CD-ROM>/Data/Unix/FLEXLM/sparc-solaris ..	8, 10, 20	<i>lmhostid</i>7, 21
<CD-ROM>/Data/Unix/FLEXLM/x86-linux ..	8, 10, 19	<i>lmhostid.exe</i>
<CD-ROM>/Docs/Manuals	10	6, 11, 20
<CD-ROM>\Data\Windows\FLEXLM\x86-win32... ..	10, 20	<i>lmutil</i>7, 19
<machine_hostid>	20	<i>lmutil.exe</i>6
<server_hostid>	18	
C		M
c:\flexlm.....	15	<i>MLM</i>
concurrent license	18, 19, 20	<i>MLM</i>
Config Services	11	<i>MLM.exe</i>
Configuration using Services.....	11	<i>MLM_LICENSE_FILE</i>
		15
E		P
Error -10	17	Path to the debug log file
Error -15	16	Path to the license file
Error -21	17	Path to the lmgrd.exe file
Error -5	16	Perform Status Enquiry.....
		12
F		PolySpace Client for Ada.....
<i>FLEXiDCleanupUtility.exe</i>	6	18
<i>FLEXiDInstaller.exe</i>	6, 10	PolySpace Client for C/C++
FLEXnet 10.8	9	18
FLEXnet server	5	PolySpace Model Link SL
		18
H		PolySpace Model Link TL
HKEY_LOCAL_MACHINE\Software\FLEXlm\Li		18
cense Manager	15	PolySpace Server for Ada.....
<i>hostid</i>	18, 19, 20	18
		PolySpace Server for C/C++.....
I		18
individual license.....	19, 20	PolySpace UML Link RH.....
Individual license.....	19	19
		<i>PolySpace_Client_Ada</i>
L		18
license.dat.....	5, 10, 11, 12, 15, 18	<i>PolySpace_Client_C_CPP</i>
license.lic.....	15	18
LM_LICENSE_FILE	15	<i>PolySpace_Feature</i>
<i>lmdown</i>	7, 11	18
<i>lmdown.exe</i>	6	<i>PolySpace_Model_Link_SL</i>
		18
		<i>PolySpace_Model_Link_TL</i>
		18
		<i>PolySpace_Server_Ada</i>
		18
		<i>PolySpace_Server_C_CPP</i>
		18
		<i>PolySpace_UML_Link_RH</i>
		19
		<i>polyspace-ada95-check-license</i>
		15
		<i>polyspace-ada-check-license</i>
		15
		<i>polyspace-c-check-license</i>
		15
		<i>polyspace-cpp-check-license</i>
		15
		PolySpaceInstallCommon
		15
		S
		Server Status
		12
		Service Name
		11
		Start/Stop/ReRead.....
		12
		V
		-vsn.....
		21

